

**Importer & Channel Partner**

**ABB**

Power and productivity  
for a better world™

**Schneider  
Electric**  
*Building a New Electric World*

**SIEMENS**  
*Ingenuity for life*

 **HENIKWON**

 **GRAZIADIO & C.**  
ITALIAN BUSBARS AROUND THE WORLD

**Complete Power Solution, Distribution  
Lighting Automation Products**

**Combining building control with  
technologies of the future**

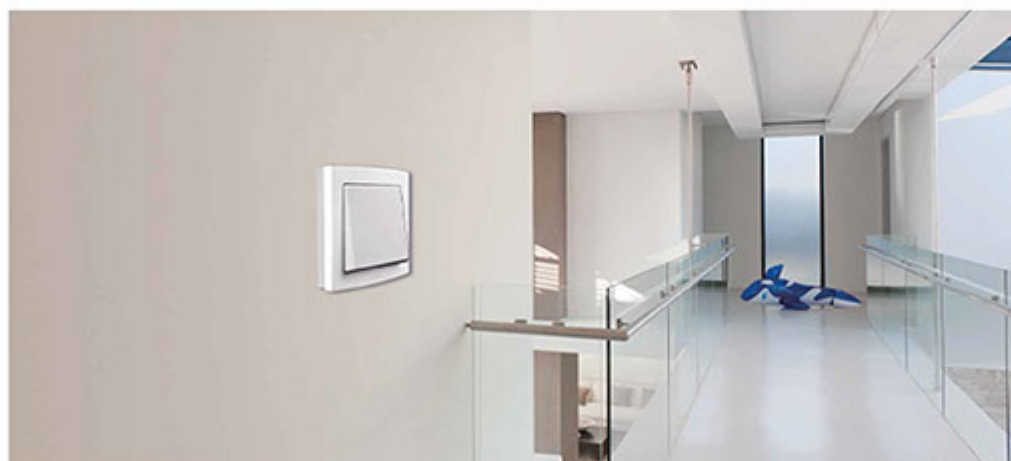
[www.anexbd.com](http://www.anexbd.com)

[www.anexsellbazar.com.bd](http://www.anexsellbazar.com.bd)

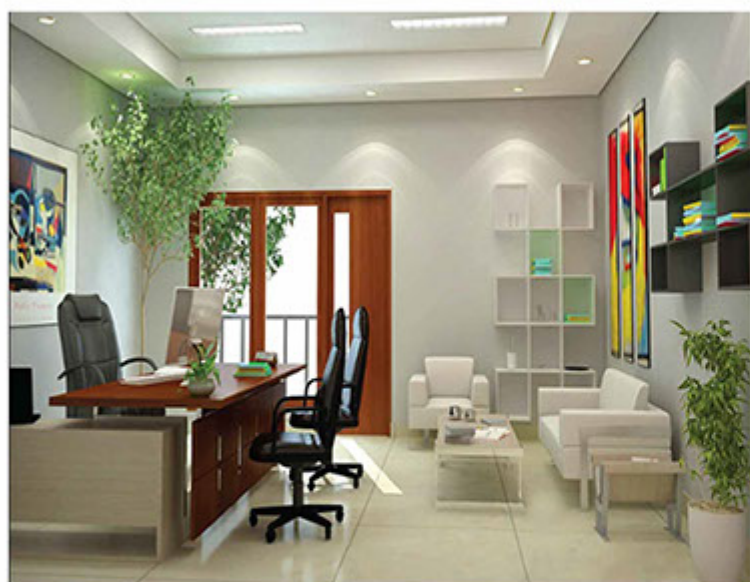
**Anex Engineering & Electric Company  
Anex Corporation**

# Switch & Socket

The maximum comfort in everyday life Concept bs range create an atmosphere of comfort and well-being. The combination of quality, functionality, and elegance makes it the ideal choice for any kind of building. The unique design makes it the perfect range to meet your desired look and feel of switches and sockets with profound technology and comprehensive functionality. A wide colour variety makes it always a perfect fit to the room decor and sets an elegant accent to the overall look. Because elegance lies in the details



Inspired by the influential Bauhaus movement, expresses a pleasing form follows function. With a slim and trim profile the sleek clean lines and subtle curves manifest an art of simple, elegant minimalism. Every piece in this robustly constructed rang sits perfectly within the context of any modern interior design and this is a style of modern simplicity that is always within your reach.





## Smart Switches

EU Standard Gang Touch Wall Light Switch

EU Standard Gang Wi-Fi Switch

WIFI Dimmer Switch Voice Control Alexa/Google Assistant IFTTT

WiFi Curtain Switch EU Standard Smart Shutter App Control Switch

### Description:

Switch Type: Touch Switch

Material: Plastic

Color: white/black/golden

Panel Material: Tempered Crystal Glass Panel

Operating Environment: -20~70 centigrade

Size: 86\*86\*36mm

Voltage: 110-250V AC 50/60Hz

Power Supply: Live + Neutral line

Self-Power Consuming: Less than 0.1mA

Note: The Wifi Switch should be powered up through L+N wires.

The wireless wall switch can be added to iOS/Android App eWeLink via WiFi, allowing users to remotely control connected lights or appliances separately from anywhere at any time.



### Feature:

1. Toughened crystal glass panel design, no fading, looks elegant .
2. With blue LED indicator, very distinguished, more humanization design.
3. E-start, no sparking contacts.
4. Brand new imported American IC intelligent chip, more sensitive on touch.
5. Protection of over-current, anti-interference.
6. Touch control ensures longer service life than traditional switch.
7. Single live wire control, easy to install, replace the old switch directly.
8. More humanization design.
9. Widely used for home, villa, hotel, office, hospital and so on.



## Building Control Systems

KNX is the intelligent building control system for all areas in which you live and work. From single-family houses to office complexes, the comprehensive portfolio of KNX solutions from Schneider Electric/ABB enables you to achieve flexible, energyefficient, comfortable and safe solutions that are easy to plan, install and operate.



**Efficiency is the success factor in modern buildings.**

**Contemporary building control has got to be easy and intelligent.**

### Safety and security:

To let residents feel as safe as possible, building technology must be able to react in a fast and intelligent way in any situation and at any time. No matter whether the building is full of life or quiet.

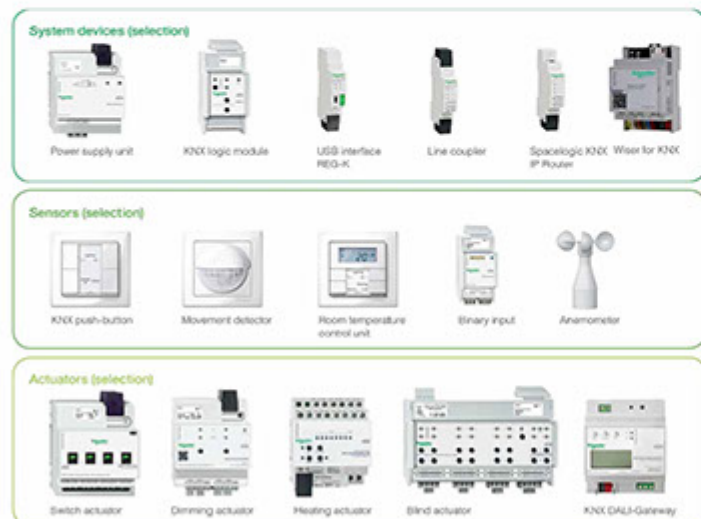


### Comfort:

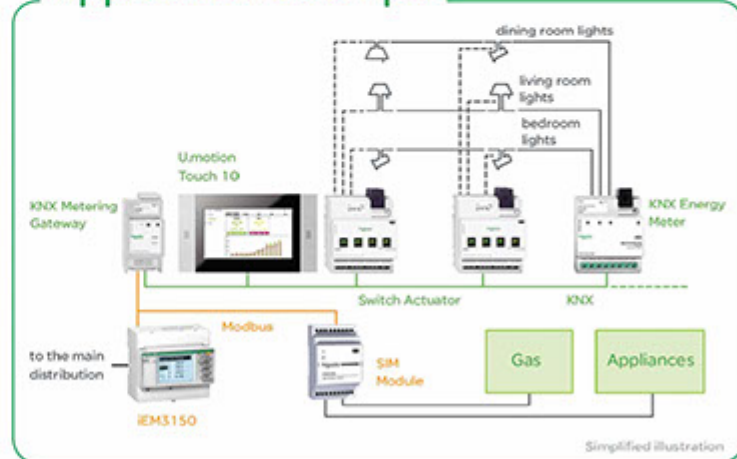
Everyone nowadays expects more comfort and convenience in their domestic and working lives. What is called for are comfortable solutions that can be operated straightforwardly and without fuss, to make living and working easier.

### Cost efficiency:

Intelligent networking of all building systems can avoid unnecessary energy consumption and reduce operating costs on a sustained basis. The ability to expand modular KNX system technology ensures economical solutions that are guaranteed to remain tailor-made over the long haul.



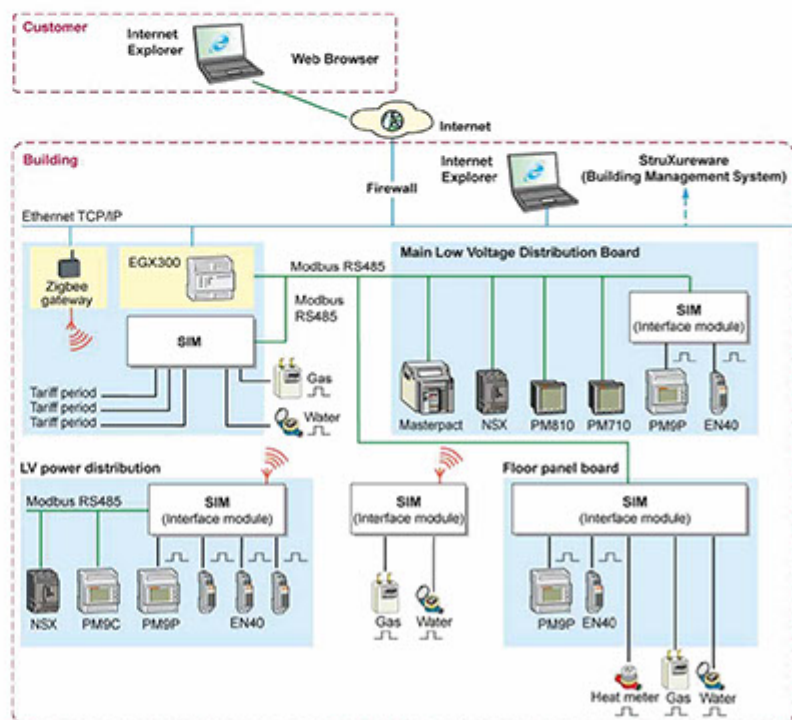
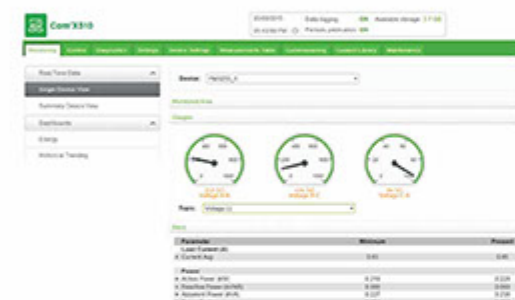
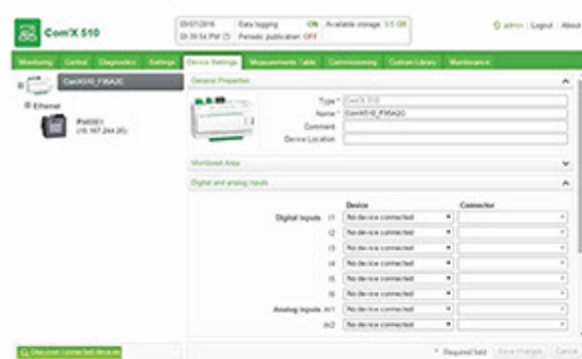
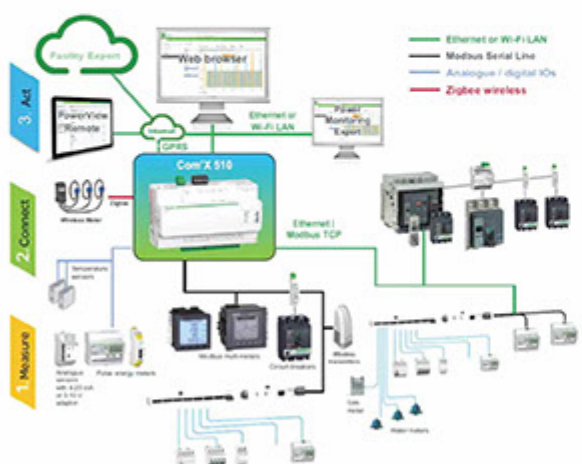
### Application Example





# Energy Monitoring System

Energy monitoring System collects and stores energy data from electrical distribution devices, smart panels, environmental sensors (e.g. temperature, humidity, and CO2 levels in a building), and WAGES metering devices. The easy-to-navigate software analyzes real-time data and historical data, providing customers with a comprehensive view of their energy consumption and enabling the implementation of energy-efficient actions and predictive maintenance.



Energy Server Com'X forms one part of your total energy management solution. The plug-and-play software helps building automation customers monitor their energy assets and identify opportunities to save energy and lower energy bills. It has the capability to log and store two years' worth of data and embedded web pages, meaning all your energy data can be viewed and managed onsite.



## Key benefits of the Energy Server Com'X:

- # Quick fitting – into electrical switch boards.
- # Embedded energy management software.
- # Gateway – data from connected devices is available in real time.
- # Data publisher – batches of collected and stored data can also be periodically transmitted to an internet server as XML and CSV files.

## Miniature Circuit Breaker (MCB)

For secure and sound operations in a building or industry, one requires a foolproof system powered by latest technology and modern infrastructure. To back the entire system and protect it from unwanted breakdown, heavy duty Miniature circuit breaker is required. Our MCBs are much more reliable than the others. We cater the industrial segment by delivering best in class Miniature circuit breaker.

### Features:

- # Diverse range of best in class industrial Miniature Circuit Breaker (MCBs).
- # Nominal current: 0.5A to 63A.
- # Large choice of breaking capacities and tripping curves: B,C,D.
- # Compliance with standards: IS/IEC 60898, IEC/EN 60898 and IEC 60947-2  
ISI and CE marked.
- # Suitable for isolation in accordance with industrial standards: IEC 60947.
- # Optional add-on earth leakage modules.
- # Suitable for additional Protection and Indication auxiliaries: ON/OFF, Trip.
- # Suitable for DC application: 60Vdc per pole.



### Benefits:

- # Ensures no accidental contact with live part – Finger-proof IP-20 terminals.
- # Avoids false insertion of cables and loose termination with Pull up terminals.
- # Total Flexibility : Line-Load reversibility.
- # Low cost with higher performance.
- # Reduce Downtime.
- # Easy Installation: Bi – connect terminals.
- # Increased service life: Fast Closing mechanism.
- # Environmentally friendly with 100% recyclable & recoverable materials.



## Residual Current Circuit Breaker (RCCB)

Residual Current Circuit Breaker (RCCB) is an essential safety measure when it comes to the safeguarding of all electrical circuits. These are current sensing devices, which can automatically detect and disconnect the circuit whenever a mishap occurs in the connected circuit or even when the current exceeds the rated sensitivity.

### Features:

- # Nominal current: up to 125A.
- # 30mA sensitivity: additional protection against direct contact.
- # 100, 300, 500 mA sensitivities: additional protection against fire and contact.
- # Class Si (New) - for electrically disturbed networks.
- # 4P RCCB is also suitable for 3phase 3 wire installation.
- # Conforms to IS 12640 and IEC/EN 61008 ISI and CE marked.
- # Suitable for isolation in accordance with industrial standards: IEC 60947.
- # Suitable for additional Protection and Indication auxiliaries: ON/OFF, Trip.



### Benefits:

- # Easy monitoring: Earth fault indication on front face.
- # Immunity against nuisance tripping.
- # New SI RCDs offers enhanced immunity to electrical disturbances.
- # Ensures no accidental contact with live part – Finger-proof IP-20 terminals.
- # Avoids false insertion of cables and loose termination with Pull up terminals.
- # Environmentally friendly with 100% recyclable & recoverable materials.





## Molded Case Circuit Breaker (MCCB)

Compact molded case circuit breakers (MCCBs) protect cables sized for 16A to 3200 A. Their highest breaking capacities allow them to protect also smaller cables, when connected close to a powerful energy source. As one pillar of digitally connected power distributions (EcoStruxure Power), ComPact breakers take part in energy consumption and asset management optimization. Benefit from 65 years of technological leadership, and rely on proven quality, opted for even in most demanding environments.

### Specifications:

- # Flexible installation: any position.
- # Nominal current: 16 to 630 A.
- # Breaking capacities 10KA-200KA.
- # 1, 2, 3 and 4 pole versions available.
- # Electronic and thermal-magnetic protections.
- # Advanced trip unit with metering.
- # Interchangeable trip-units.
- # Plug and ready wiring system and communicating.
- # Wealth of options for auxiliaries and accessories.
- # Integrated earth leakage protection via MicroLogic Vigi.



### Benefits:

- # Easy and efficient.
- # Standardized frame sizes for your convenience.
- # Save space, time and effort with integrated protection.
- # Easy to swap trip units and standardized accessories over time.
- # Wide range of online and offline software tools.
- # Highly resistant to environmental stresses.
- # Long operation lifespan.



## Surge Protective Device (SPD)

Surge Protective Devices are designed to protect against transient surge conditions. Large single surge events, such as lightning, can reach hundreds of thousands of volts and can cause immediate or intermittent equipment failure. However, lightning and utility power anomalies only account for 20% of transient surges. The remaining 80% of surge activity is produced internally. Although these surges may be smaller in magnitude, they occur more frequently and with continuous exposure can degrade sensitive electronic equipment within the facility.

### Benefits:

- # Improved continuity of service and safety.
- # Class 2 insulation: continuous safety for operators.
- # Quickly detects the defects of protection against the surges.
- # Certified back-up protection coordination with disconnecting circuit-breakers.
- # Remote monitoring of protection device state.



## Motor Protection & Relays (MPCB/MMS)

The manual motor protector provides manual isolation, manual motor control, and thermal overcurrent protection in one compact unit. The basic motor starter controls motors with full load currents up to 32A. The high performance manual protector, offers a higher withstand rating and visible trip indication for convenience. The additional UL 508 type E rating as a stand alone self-protected manual combination protector.

### Features :

- \* UL 508 Listed, CSA Certified, and CE Marked to meet global needs.
- \* Motor control and protection in accordance with international standards.
- \* 10-100 kA UL-listed short circuit current rating.
- \* 3-pole, 30 hp @ 575 V maximum.
- \* Compact size 45 mm wide.
- \* Class 10 ambient compensated Overload relay.
- \* Single phase sensitivity.
- \* Magnetic instantaneous short-circuit protection.
- \* Test trip mechanism.



## Over Load Relay

Relays, Overload Relays, Class 10 or Class 20 bimetallic overload relays are available up to 140 A. They are bimetallic ambient compensated and are available with or without single-phase sensitivity for phase unbalance and phase loss protection. New solid state overload relays are available for 90 to 150 A applications. Both bimetallic and solid-state overload relays

### Features:

- \* Isolated N.C. trip contact and N.O. alarm contacts.
- \* Manual or Automatic reset function (bi-metallic versions only).
- \* Tamper-resistant window for FLA settings.
- \* Test trip button.



## Timer and Phase Monitoring Relay:

The timing relays are designed to provide cost-effective solutions for your industrial time delay relay needs. Being one of the widest time delay relay offers available in the marketplace; we are likely to have the timer you need commercially of the shelf. Available in a wide array of forms, fits and functions; Timers offer the ultimate in flexibility and performance. Accurate adjustments, legible wiring diagrams and an interactive timer demo; make selection quick and easy.



### Features:

Phase monitoring relays protect loads from voltage fault conditions. The devices protect against phase loss, phase reversal and phase unbalance due to blown fuses, broken wires or worn contacts. They monitor simultaneous voltage drops/increases and help to prevent damage machinery and personal injury.





## Inverter (VFD) & Soft Starter

The variable frequency drive from Schneider Electric/ABB/LS provides high performance and improved connectivity, while reducing panel space, improving uptime and maximizing machine through-put. Its extra-slim, book-style design allows side-by-side mounting, as well as the direct attachment of a self-protected disconnect. The Drive can be mounted in smaller spaces, minimizing wiring, and reducing machine costs.

### Specifications:

1. 3-Phases 200/240V - 380/480V - 500/690VAC
2. Single Phases 200/240VAC

### Technical Parameter:

- a) From 0.75 to 800 kW. b) Speed Range: 1:100 in open loop mode. c) Overload: 110% ... 120% - 60 s. d) Graphic keypad: plain text, navigation button, "Simply Start" menu to start immediately and profit at once from the full performance
- e) Energy saving law, Quadratic motor control law. f) Conformity to the international Standards and Certifications: CE, UL, CSA, C-Tick. g) Input/output extension cards. h) More than 150 functions available. i) Protection of motor and drive j) Safety function included.

### Benefits:

- i) In the heart of your applications ii) Open to main building and industry communication networks. Ingenious, the Inverter can be customised to meet your needs.

### Applications:

Range dedicated to Verity of pumps motors and fans applications for the industry and building markets. Exceptional performances, advanced functionalities. High performance variable torque applications: i) Motor: Safety with forced function (fault inhibition, selection of operating direction and the reference speed). ii) Multipump: With the programmable card multipump, offers you flexibility, user-friendliness and adaptability. iii) Pumps: Essential functions for your installation protection under load, overload and fluid absence detection.

### Soft Starter:

The device unit supports the controlled starting and stopping via voltage and torque of three-phase squirrel cage asynchronous motors for power ratings between 4 and 400 kW. It comes ready-to-use for standard applications with class 10 motor protection. Soft start/soft stop unit has been designed to satisfy the performance requirements of applications where ruggedness, the safety of personnel and equipment, and easy commissioning are at a premium. The bypass function (based on a bypass contactor) has been made easier to use by integrating it into the starter. This approach suits applications where it may be necessary to bypass the starter at the end of the starting process, in order to limit the starter's heat dissipation.

### Simplifies installation and operation:

Saves time on wiring (6 terminals instead of 12) Optimises the size of your enclosures (very compact product) Keeps temperature rises to a minimum (low heat dissipation) Reduces the number of components to manage (multifunction product).



## Air Circuit Breaker (ACB)

The air circuit breaker from 800 to 6300A, NT/NW/Emax2 range benefits from the outstanding features developed for the industrial version easy of installation, optimum continuity of service for industrial applications.

Nominal current: 800 to 6300 A

Breaking performance: 42 to 100 kA at 220/415 V AC

Voltage rating: up to 690 V

3-pole/4-pole

Fixed/ Withdrawable version

Switch-disconnector version

Micrologic control units: 2.0A, 5.0A

18g - 11 ms 1/2 sine shock pulse

Vibration: 2g acceleration

5 to 60Hz - Insensitivity to naval displacement.

Protection unit: LSI/LSIG.

Compliance with international standards IEC 60947-1-2-3.



ACB

## Vacuum Circuit Breaker (VCB)

Vacuum Circuit Breakers (Indoor Type) 12...36kV 630...3150 A- 16...50kA . The new type VCB are a synthesis of renowned technology in designing and constructing vacuum interrupters embedded in poles, and excellency in design, engineering and production of circuit-breakers. The VCB medium voltage circuit-breakers use vacuum interrupters embedded in the poles. This construction technique makes the circuit breaker poles particularly sturdy and protects the interrupter from impacts, dust deposits and humidity. The vacuum interrupter houses the contacts and makes up the interrupting chamber.

### Features:

The VCB are used in power distribution for control and protection of cables, overhead lines, transformer and distribution substations, motors, transformers, generators and capacitor banks.

### Standards:

The circuit-breakers comply with the IEC 62271-100, VDE 0671 part. 100, CEI EN 62271-100 file 7642 (2005-5) Standards and with those of the major industrialised countries. The VCB have undergone the tests and guarantee the safety and reliability of the apparatus in service in any installation.

### Live Tank Vacuum Circuit Breaker (Outdoor Type):

The breakers are designed as per the latest IEC standards. Vacuum Circuit Breakers are designed for distribution systems rated at 36kV and are of live tank design. The vacuum interrupters are housed in follow porcelain insulators filled with SF<sub>6</sub>/Nitrogen gas at 0.5 bar above atmospheric pressure to safeguard against condensation. A spring operated mechanism is housed in a weather-proof cabinet and a sturdy extruded steel angle structure is used for mounting the breaker.



11KV VCB



33KV VCB

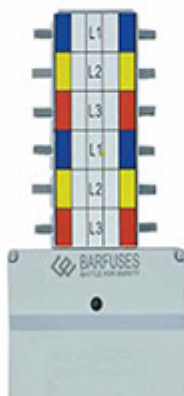


## Sub Distribution Board (SDB)

Propel your power distribution systems with new-age, reliable, and safe Sub distribution boards. Driven by innovation and technology, these sleek systems are elegant in looks and safe in performance- ensuring the power flow & distribution remains as smooth as possible at all times. Distribution boards are a critical part of any circuitry in your homes, offices, or any other place. They serve an influential role and cannot be neglected at any cost. One of the most important devices, they make sure that the current is adequately distributed to all the devices facilitating proper functioning. This also makes sure that none of the devices are negatively impacted by the effects of overcurrents or short circuits.. These distribution boards not only save you from the harmful results of current but also augment the look of your walls. The various designs give you the dynamism to choose the ones that are ideal for your home. Choose from the range of distribution boards available at the best prices and transform the way you live at home.

### Main construction features:

- # Structure in epoxy coated metal sheets, 1mm above thickness.
- # Wall installation for indoor environments.
- # Degree of protection - IP43 with door / Mechanical resistance IK 07.
- # Busbar rating: 250A.
- # Number of ways: 4, 8, 12, 16, 20, 24, 36 & 48.
- # Compliance with IEC BS EN 61439 1-2.
- # Simple wiring of all cabinets, both horizontally and vertically.
- # Easy internal accessibility for wiring operations and maintenance.
- # Pre-packaged kits for specific applications (e.g. surge protection, metering).



## LT Switchgear

LT Switchgear equipped with sheet steel, metal clad, dust and vermin Proof, free standing, floor Mounting type, 415V,50Hz up to 6300A, indoor Type Low Tension Switchgear and Synchronizing panel to Control & Distribute the power in different installations like Power Stations, Industries, Mills & Factories, Housing & Commercial Complex & other Important Installations. Switchgear Panels are designed and manufactured for Indoor and outdoor, fixed type or fully draw-out type With frame structure for modular construction for easy Extension & Coupling depending on the condition of Installation. The Low Tension Switchgear comprises of Air Circuit Breaker, Moulded Case Circuit Breaker, Fuse Switch Unit, Disconnecter etc. to meet individual requirement Which comply with IEC/BS and relevant international standard.

CONSTRUCTION : Metal clad

RATED VOLTAGE : Up-to 1000V

RATED CURRENT : Up-to 6000A

RATED FREQUENCY : 50Hz

Short Time Current Ratings for 1Sec.: 50KA

## HT Switchgear & Control Panel:

High Voltage Switchgear comprises the units designed for rated voltage of 11KV and current range up to 1250A, switchgear comprises of SF6 Circuit Breaker, Vacuum Circuit Breaker, Load Break Switch, vacuum Contactor, Disconnecter etc. to meet Individual requirement which comply with IEC/BS and other relevant international Standard. It has features of long service life, reliability and high degree of quality & Safety. High Tension Switchgears are suitable for Electrical Sub-Station with Transformer feeder, measuring, Sectionalizing, ring main unit and motor protection.

CONSTRUCTION : Sheet Steel, Metal clad

RATED VOLTAGE : 11 Kv

RATED CURRENT : 630A, 800A, 1250A

RATED FREQUENCY : 50Hz

Short Time Current Ratings for 3sec. : 20KA, 31.5KA

## Key Features :

- # Long maintenance free operation.
- # Fully metal clad design.
- # Horizontal isolation.
- # Busbar system fully insulated.
- # Manual or motor charged main closing mechanis.
- # Fully rated with switches.
- # Complete set of interlocks and padlocking facilities.
- # Isolatable voltage transformer.
- # Ample current transformer accommodation.
- # Extensive use in tropical environments.
- # Safety interlocks.





# Magnetic Contactor, Capacitor & PFI Plant

## EasyPlusCan Capacitors:

EasyPlusCan are low voltage aluminium can capacitors

### Features:

- High life expectancy up to 160,000 hours
- Voltage up to 830 V
- Power ratings up to 50 kvar
- Operating temperature up to 70°C
- Degree of protection IP20
- Compliant with standards IEC 600831-1 and-2

VarplusCan capacitors must be selected depending on the A safe, reliable and high-performance solution for power

### Safety:

- Self-healing
- Pressure-sensitive disconnector
- Discharge resistors fitted-finger proof Clamptite terminals
- High thermal efficiency

## Power Factor Regulator (PFI Meter):

The power factor regulator combines comprehensive operations with user-friendly control settings. It uses numerical techniques to compute the phase difference between the fundamentals of current and voltage, enabling precise power factor measurement even in the presence of harmonics.

### Key Benefits:

Microprocessor based intelligent auto switching control Automatic C/K and rated step adjustment Programmable sensitivity Easy to read digital display Complies with IEC 61000-6-2 standards.

## Capacitor Duty Contactor:

The capacitor duty contactor is a specially designed contactor for switching 3-phase, single or multiple step capacitor banks in power factor correction applications. It suppresses high switching starting currents of the power capacitors.

### Advantages:

- Using a capacitor duty contactor has many benefits for the system.
- Excellent damping of inrush current.
- Improved power quality. (e.g. avoidance of voltage sags)
- Extended capacitor life.
- Soft switching of the capacitor and thus longer useful service life.
- Reduced ohmic losses.
- Increased system reliability.
- The unplanned halt of production and the risk of reactive penalties decrease.



# Distribution Transformer

## Oil Immersed Transformers:

Our range of oil immersed transformers is from 100kVA to 5MVA with voltage up to 145kV. Distribution transformer are appreciated for their reliability and ideal for installation, in indoor & outdoor as required. The traditional oil transformers are available both in the version with oil keeper or hermetic type with integral filling. On indication of the customer, they can be equipped with special control and safety devices and with the use of biodegradable oil.



## Electrical characteristics: Ecodesign to EU regulation no.: 548/2014

rated power (kVA)		160	250	315	400	500	630	800	1000	1250	1600	2000	2500	3150
rated voltage	primary	12kV												
	secondary at no-load	415V between phases, 240V phase to neutral												
rated insulation level		12kV for 11kV												
HV tapping range(off voltage)		± 2.5%, ± 5%												
vector group		Dyn11												
losses	no - load	210	300	360	430	510	600	650	770	950	1200	1450	1750	2200
	load	2350	3250	3900	4600	5500	6500	8400	10500	11000	14000	18000	22000	27500
rated impedance voltage (%)		4	4	4	4	4	4/6	6	6	6	6	6	6	6
voltage drop at full load (%)	p.f= 1	1.25	1.14	1.03	0.99	1.06	1.19	0.9	0.93	0.85	0.8	0.78	0.7	0.7
	p.f = 0.8	3.12	3.21	3.15	3.109	3.8	4.9	4.78	4.78	4.82	4.15	4.2	4.8	4.76
efficiencies (%)	p.f =1 at 100% load	98.48	98.62	98.8	99.08	98.9	98.64	98.97	98.94	99.01	99.13	99.11	99.16	99.15
	p.f = 0.8 at 100% load	98.11	98.28	98.6	98.85	98.5	98.3	98.72	98.68	98.76	98.92	98.89	98.96	98.96

## Dimensions and weights :

KVA	100	160	200	250	315	400	500	630	800	1000	1250	1600	2000	2500	3150
A	965	1065	1125	1161	1235	1285	1319	1391	1595	1619	1739	1757	1988	2100	2250
B	495	555	574	593	660	556	659	683	818	846	899	905	1043	1110	1350
C	1165	1246	1243	1255	1276	1486	1558	1788	1902	1779	1931	2050	2136	2200	2274
D	765	846	843	855	876	1086	1158	1288	1402	1279	1431	1500	1576	1700	1714
Flat bars weights (kg) total	712	881	1003	1074	1340	1620	1977	2423	2900	3083	3920	4585	5668	6032	6100
mineral oil	181	200	215	235	287	407	455	557	710	712	959	1107	1286	1514	1658

Note: Dimension may change depending on the electrical parameter as per final design at the time of order acknowledgement.

## Cast resin transformers:

Our range of cast resin transformers is from 100kVA to 20MVA with voltages up to 36kV cast resin transformers are distinguished for their customized design which makes them immediately recognizable. And above all, the market has appreciated the technical and quality features for more than years. Cast resin transformers are ideal for installation in various applications that range from the production to distribution of electricity.





## Bus-bar Trunking System

### Lighting or Low Power Bus-bar:

Lighting busbar trunking system is used for the distribution of lighting energy or low-power energy. It is offered with nominal ratings from 25A to 63A, where the active Conductors are enclosed in a copper coextruded sheet made of self-extinguishing halogen-free thermoplastic material.

The busbar system can be produced with a aluminium case which is particularly suitable for installations in cretical environments.

The circuit configuration are 2P+2P, 4P+2P, 4P+4P and 6P+6P in a double case which divides mechanically the two circuits along the entire length to ensure the continuity of the service (for example, in cases when there is a need for an emergency circuit) IP4X/IP5X

Tap off-plug from 6A to 32A without fuse or with fuse Standards: IEC 60439 > > > 61439



### Medium Power Bus-bar:

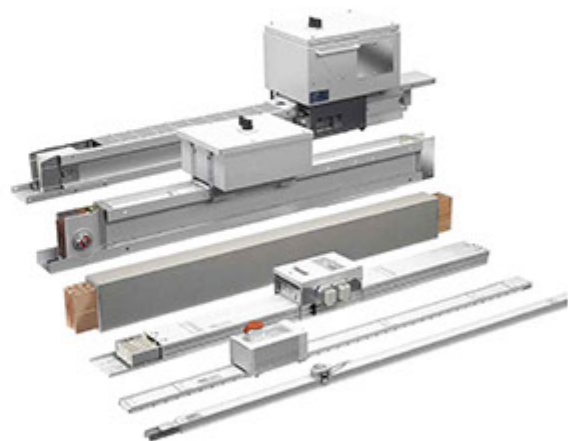
Medium Power Busbar is a patented range of busbar trunking designed and manufactured in accordance with IEC60439-1 and IEC60439-2 that is utilized within building and industrial applications to deliver power to sub distribution units.

Medium Power Busbar has been developed primarily for distributed riser applications within muti-tenanted, multi-functional commercial and indstrial premises.

Medium Power Busbar is manufactured in EN ISO9001:2000 and ENOHSAS18001 certified facility.



- Ratings - 160A, 250A, 400A, 630A, 800A.
- Feeder and distribution Busbar.
- Fully ASTA Tested and Cerrtified.
- Operating temperotures to IEC 60439-2.
- Air Insulated.
- Aluminium Housing.
- Copper or Auminium Conductors.
- Degree of protection IP4X, IP5X, IP6X Multiple five bar configuration.
- Is available to suit your project requirements.
- TP&N.
- TP&N complete with 100% Earth (Case).
- TP&N complete with 100% Clean Earth.







# Power Generator Set



## TECHNICAL SPECIFICATION



ESCORTS													
		Generator output		Egnine output (Gross)					Egnine Displacement	Rated Current	In Built Tank Fuel Capacity	Assoustic enclosure dimensions	Approx Weight
Genset Model	Engine Model	kVA	kWe	kWm	bHp	Number of Cylinders	Aspiration	Governor	(Litres)	(Amps)	(Litres)	L(mm) x W(mm) X H (mm)	(Kgs)
PKGES-10	G15 - II	10	8	16	21.6	2 , In-Line	NA	Mechanical / Class A1	1.56	14	35	1765 X 900 X 1355	690
PKGES-15	G15 - II	15	12	16	21.6	2 , In-Line	NA	Mechanical / Class A1	1.56	21	35	1765 X 900 X 1355	700
PKGES-20	G20 - II	20	16	19	25	3 , In-Line	NA	Mechanical / Class A1	2.145	28	60	2155 X 940 X 1250	880
PKGES-25	G25 - II	25	20	25	33.6	3 , In-Line	TCI	Mechanical / Class A1	2.145	35	85	2400 X 1040 X 1400	950
PKGES-30	G30 - II	30	24	31	42	3 , In-Line	TCI	Mechanical / Class A1	2.145	42	85	2400 X 1040 X 1400	960
PKGES-35	G40 - II	35	28	43	58	4 , In-Line	TCI	Mechanical / Class A1	2.86	49	85	2500 X 1040 X 1400	970
PKGES-40	G40 - II	40	32	43	58	4 , In-Line	TCI	Mechanical / Class A1	2.86	56	85	2500 X 1040 X 1400	1050
PKGES-45	G40 - II	45	36	43	58	4 , In-Line	TCI	Mechanical / Class A1	2.86	63	85	2500 X 1040 X 1400	1060
PKGES-50	G62.5	50	40	66	88	4 , In-Line	TCI	Mechanical / Class A1	3.68	70	130	2800 X 1080 X 1440	1150
PKGES-62.5	G62.6	62.5	50	66	88	4 , In-Line	TCI	Mechanical / Class A1	3.68	87	130	2800 X 1080 X 1440	1200



VECV													
		Generator output		Egnine output (Gross)					Egnine Displacement	Rated Current	In Built Tank Fuel Capacity	Assoustic enclosure dimensions	Approx Weight
Genset Model	Engine Model	kVA	kWe	kWm	bHp	Number of Cylinders	Aspiration	Governor	(Litres) X H (mm)	(Amps)	(Litres)	L(mm) x W(mm) X H (mm)	(Kgs)
PKGVE-25	EE483TCI 30kVA CPCB II	25	20	28	38	4, In-Line	TCI	Mechanical / Class A1	3.3	35	60	2430 x 1000 x 1135	840
PKGVE-30	EE483TCI 30kVA CPCB II	30	24	28	38	4, In-Line	TCI	Mechanical / Class A1	3.3	42	60	2430 x 1000 x 1135	850
PKGVE-40	EE483TCI 40kVA CPCB II	40	32	39	52	4, In-Line	TCI	Mechanical / Class A1	3.3	56	90	2470 x 1000 x 1315	900
PKGVE-50	EE483TCI 50kVA CPCB II	50	40	48	65	4, In-Line	TCI	Mechanical / Class A1	3.3	70	130	2685 X 1080 X 1455	1085
PKGVE-62.5	EE483TCI 62.5kVA CPCB II	62.5	50	60	80	4, In-Line	TCI	Mechanical / Class A1	3.3	87	130	2685 X 1080 X 1455	1140
PKGVE-82.5	EE683TCI 82.5kVA CPCB II	82.5	66	78	105	6, In-Line	TCI	Mechanical / Class A1	4.9	115	130	3100 X 1100 X 1575	1585
PKGVE-100	EE694TCI 125kVA CPCB II	100	80	95	127	6, In-Line	TCI	Mechanical / Class A1	5.7	139	200	3400 x 1200 x 1500	1640
PKGVE-125	EE694TCI 125kVA CPCB II	125	100	115	156	6, In-Line	TCI	Mechanical / Class A1	5.7	174	200	3400 x 1200 x 1500	1680
PKGVE-160	EE694TCI 160kVA CPCB II	160	128	148	201	6, In-Line	TCI	Electronic / Class A1	5.7	222	320	3800 x 1400 x 1820	2115



VECV													
		Generator output		Egnine output (Gross)					Egnine Displacement	Rated Current	In Built Tank Fuel Capacity	Assoustic enclosure dimensions	Approx Weight
Genset Model	Engine Model	kVA	kWe	kWm	bHp	Number of Cylinders	Aspiration	Governor	(Litres)	(Amps)	(Litres)	L(mm) x W(mm) X H (mm)	(Kgs)
PKGVPII-250	TAD754GE	250	200	228	310	6, In-Line	TC	Electronic / Class G3	7.15	348	600	4000x1500x2500	3100
PKGVPII-320	TAD1351GE	320	256	286	389	6, In-Line	TC	Electronic / Class G3	12.78	445	990	5000x1910x2340	5200
PKGVPII-380	TAD1354GE	380	304	339	461	6, In-Line	TC	Electronic / Class G3	12.78	528	990	5200x1910x2390	6100
PKGVPII-415	TAD1355GE	415	320	369	502	6, In-Line	TC	Electronic / Class G3	12.78	556	990	5200x1910x2390	6200
PKGVPII-500	TAD1651GE	500	400	441	600	6, In-Line	TC	Electronic / Class G3	16.12	695	990	5400x1910x2390	6400

## Solar Systems

Solar cells directly convert sunlight into electricity by means of the photovoltaic effect. This occurs when photons are absorbed by a solar cell which generates a voltage across its terminals. Cells are connected in series within a solar module to provide sufficient voltage to operate a system.

Modules can be connected in series and parallel to increase the system power. This solid state process provides a clean, silent, non polluting and reliable source of electrical energy.

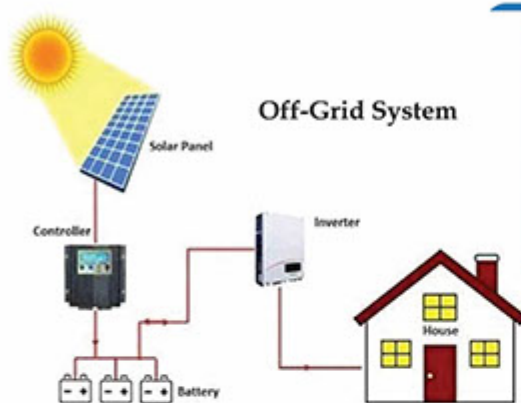
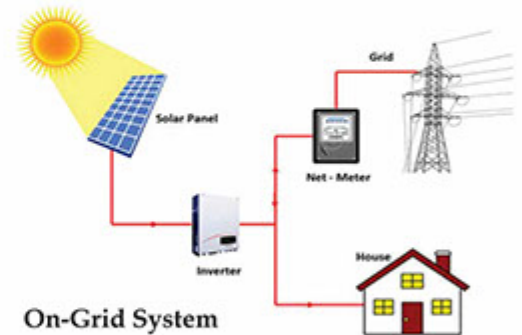
There are two photovoltaic (PV) technologies:

- **Multicrystalline (also called polycrystalline)**

Made from cells cut from several silicon crystals.

- **Monocrystalline**

Made from cells cut from single silicon crystals.



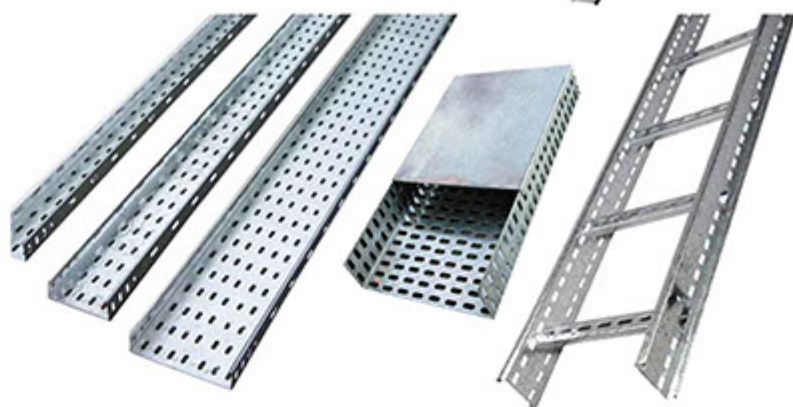
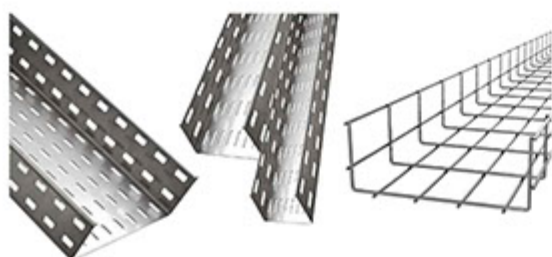
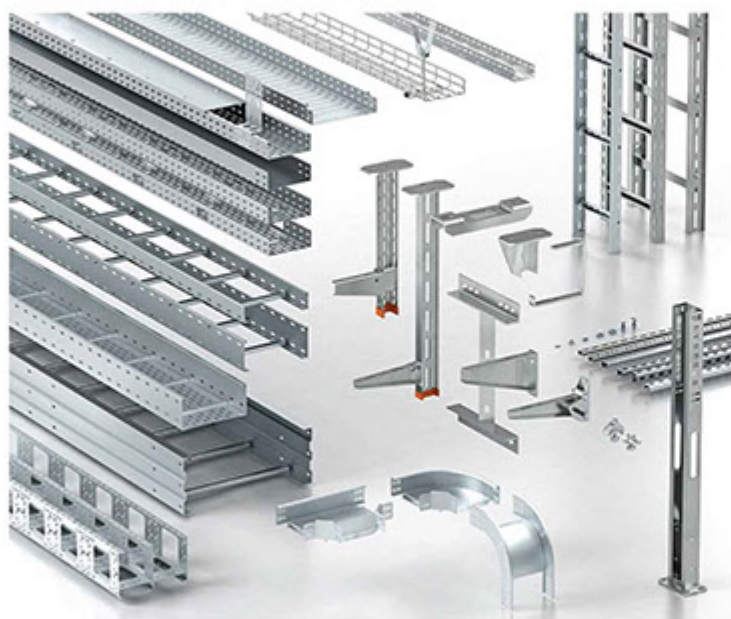
Energy for everybody



The products cover a wide range of Solar Inverters (1.5KW~1MW), Solar Off-grid inverters (0.5KVA-200KVA), UPS, and Spring Solar Pumping inverter (550W-75KW). Their stable operation and excellent performance is universally recognized by users in the world.



## Cable Tray & Ladder



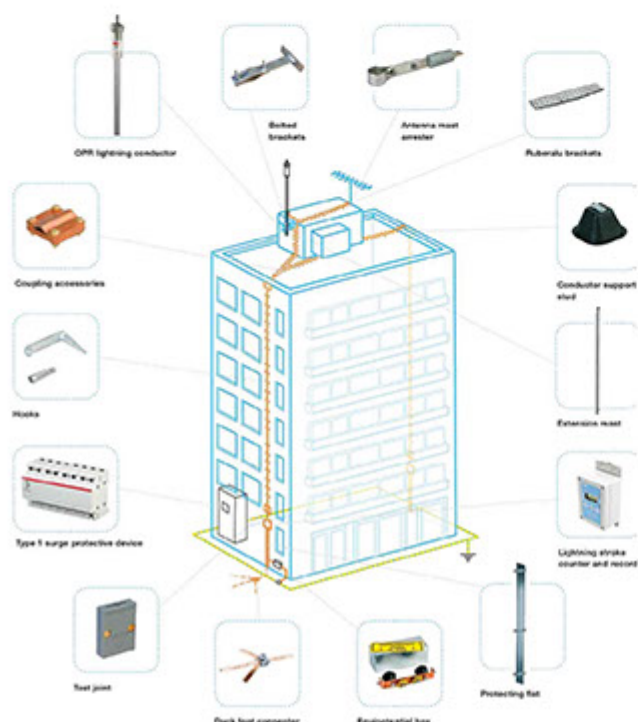


# Lightning Protection System

## OPR lightning protection systems

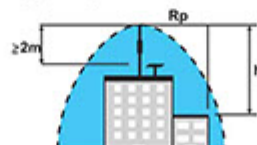
### Lightning air terminal

ISO 9001:2015 Certified Company



### Calculation of protected areas

The radius of protection  $R_p$  of a OPR is given by the French standard NF C 17-102 of July 1995. It depends on the initiation advance  $\Delta T$  of the OPR measured in the high voltage Laboratory, on the levels of protection I, II, III or IV calculated according to the lightning risk assessment guides or standards (IEC 62305-2) and on the height  $h$  of the lightning conductor over the area to be protected (minimum height = 2m).



$R_p$ : radius of protection in a horizontal plane located at a vertical distance  $h$  from the OPR tip.

$h$ : height of the OPR tip above the surface(s) to be protected.

$D$ : standardised striking distance.

$\Delta L = 106 \cdot \Delta T$  (initiation advance)

$R_p = \sqrt{h(2D - \Delta L) + \Delta L^2}$  (for  $h \geq 5m$ )

For  $h < 5m$ , see the radius of protection table opposite.

$\Delta T$ : initiation advance measured during efficiency tests according to appendix C of the French standard NF C 17-102



Level of protection	OPR radius of protection							
	I (D = 20 m)		II (D = 30 m)		III (D = 45 m)		IV (D = 60 m)	
OPR	OPR	OPR	OPR	OPR	OPR	OPR	OPR	OPR
h(m)	Radius of protection $R_p$ (m)							
2	19	32	22	35	25	40	28	44
3	28	48	33	52	38	59	42	65
4	38	64	44	69	50	78	57	87
5	48	79	55	88	63	97	71	107
6	48	79	55	87	64	97	72	107
8	49	7	56	87	65	98	73	108
10	49	79	57	88	66	99	75	109
15	50	80	58	89	69	101	78	111
20	50	80	59	89	71	102	81	113
45	50	80	60	90	75	105	89	119
60	50	80	60	90	75	105	90	120

For the OPR 60, limiting the value of  $\Delta T$ , that used in the radius of protection calculation, to 60  $\mu s$  has been validated by the experiment conducted by the members of Gimelec (Group of Industries for Materials for Electrical Equipment and associated Industrial Electronics).

### Dhaka Office:

Matuail College Road (Near SMC Hospital),  
Matuail, Jatrahari, Dhaka-1362.  
Tel : 88-02-9513632, Cell : 01313-700730  
E-mail : sell@anexbd.com

### Corporate Office:

3/4B, Green Heaven, Purana Paltan,  
Dhaka - 1205.  
Tel : 88-02-9566214, 01727-041241  
E-mail : info@anexbd.com

### Chattogram Office:

House # 2, Road#2, Block-G, Halishahar Ctg.-4216.  
Tel : 88-031-2520023, 01750-030500  
E-mail : anex@anexbd.com  
anexctg@yahoo.com

### Khulna Office:

810, BIDC Road, Khaishpur, Khulna.  
Cell : 01313-700746  
E-mail : anex\_khulna@anexbd.com

### Sales & Display:

219 (Ground Floor), Captan Bazar Complex-1,  
Nawabpur, Dhaka- 1203  
Cell : 01313-700731  
E-mail : sales@anexbd.com

### Factory:

Matuail College Road (Opposite Matuail Medical)  
Matuail, Jatrahari, Dhaka-1362.  
Mob: 01313-700730  
E-mail : anex\_factory@anexbd.com